



**Performance Automotive
Electrical Wiring
Components**

Street Rods

Off Road

Racecars

Marine

Trucks

RV's

Trailers

Street Machines

Catalog

Welcome to Fastronix Solutions

Your complete source for performance electrical wiring components for aftermarket applications. In your hands is our latest offering in our ongoing quest to provide you, the end user, solutions to your electrical wiring dilemma. After browsing through the **Fastronix Solutions** extensive line of unique and hard to find wiring components, you'll be excited with a newfound confidence to tackle that wiring project you've put on the back burner. So whether you're going On-track or Off-road, do the job right and keep the current flowing with **Fastronix Solutions Components**.

Catalog Contents

Battery Power Accessories

~ Battery Cable -----	3
~ Heavy Duty Heat Shrink -----	3
~ Battery Cable Ends -----	3-4
~ Copper Lug Ends -----	4
~ Terminal Covers -----	4
~ Battery Disconnects -----	5
~ Solenoids -----	5
~ Engine Ground Strap -----	5
~ Power Junction Blocks -----	6

Circuit Protection

~ Fuse Blocks / Panels -----	7
~ Fuse Holders -----	8
~ Fuses -----	8
~ Circuit Breakers -----	9

Switches

~ Toggle Switches -----	10
~ LED Indicators -----	10
~ Premium Lighted Rocker Switches -----	11
~ Lighted Switch Panels -----	11
~ Push Button Starter Switch -----	12

Relay Devices

~ Automotive Relays -----	13
~ Relay Sockets -----	13
~ High Power Relays -----	13

Wiring Accessories

~ Cable Clamps -----	14
~ High Temp Sleeving -----	14
~ Split Loom Tubing -----	14
~ Heat Shrink Tubing -----	14
~ Grommets / Bushings -----	15
~ Power / Ground Distribution Blocks -----	15
~ Weather Pack Connectors -----	16
~ Multi-Stud Junction Blocks -----	16
~ Cable Ties -----	17
~ Molded Connectors -----	17
~ Terminal Strips -----	17

Terminal Products

~ Heat Shrink Terminals -----	18
~ Wire Splices -----	18
~ Quick Connect Terminals -----	19
~ Insulated Ring Terminals -----	19



Eagle Eye Photography - www.eagleeye.com

Battery Accessories

Battery Cable



Heavy duty PVC jacketed multistrand copper battery cable designed for automotive and marine use. This cable is manufactured to SAE specification J1127-SGT and is available in either 2 or 4 gauge in lengths of 25 or 100 feet.

Gauge	Length	Red	Black
#4	25'	#132-225	#132-025
	100'	#132-200	#132-000
#2	25'	#133-225	#133-025
	100'	#133-200	#133-000

Battery Cable Heat Shrink



Extra heavy duty heat shrink featuring a thick adhesive inner wall which melts as tubing is shrunk around cable and fitting to completely seal battery cable connection. Shrinks down 3:1. Packaged in 4 packs of red or black. Pieces are 3/4" X 1-1/2" .

2 - Red & 2 - Black	#404-001
4 - Red	#404-020
4 - Black	#404-021

Super Flex Cable



Premium neoprene jacketed super fine stranded copper battery cable. Perfect in tight battery applications or where cable flexibility and high cranking amp power output is important. Available in either 2 or 4 gauge.

Gauge	Length	Red	Black
#4	25'	#132-425	#132-325
	100'	#132-400	#132-300
#2	25'	#133-425	#133-325
	100'	#133-400	#133-300

Battery Cable Compression Connectors



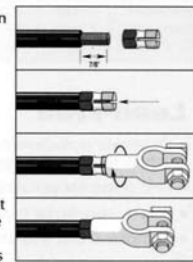
Quality copper battery compression fittings make it easy to build custom length battery cables for any application.

Simple Installation

Four Easy Steps
Quick Installation
Uses Ordinary Hand Tools



- Strip 7/8" of insulation from the cable end
- Insert bare wire into compression nut
- Thread connector on compression nut
- Hold compression nut using wrench. Rotate connector until the compression nut seats



Gauge	Post	Straight	Right Elbow	Left Elbow	Flag	Lug Ends
#4	Negative	405-103	405-105	405-107	405-111	3/8" 405-102 (qty.2)
	Positive	405-104	405-106	405-108	405-110	1/2" 405-109 (qty.2)
#1&2	Negative	405-003	405-005	405-007	405-011	3/8" 405-002 (qty.2)
	Positive	405-004	405-006	405-008	405-010	1/2" 405-009 (qty.2)

Battery Accessories

Copper Lugs



Heavy duty copper lugs. Flared end for easy cable insertion. Can be crimped or soldered. For # 2 or # 4 gauge cable. Available in 4 packs.

Ga.	Hole	Part #
#4	5/16"	#405-112
#4	3/8"	#405-113
#2	5/16"	#405-012
#2	3/8"	#405-013

Military Battery Connectors



Use in dual or multiple battery configurations to simplify battery coupling. Standard battery cable lug ends are easily installed or removed through long 3/8" bolt. Polarity specific lead construction.

Positive Terminal	#405-910
Negative Terminal	#405-911

Angled Copper Lugs



Tinned angled lugs. Use for starters or in tight areas. Available in 45 deg. or 90 deg. Crimp or solder. (2 per package).

45 degree lugs			
Angle	Gauge	5/16" hole	3/8" hole
45d	#2	#405-014	#405-015
	#4	#405-114	#405-115
90d	#2	#405-016	#405-017
	#4	#405-116	#405-117

Pre-Soldered Battery Connectors

No Crimping required. Simple to use battery cable ends for 1 & 2 gauge cable. Each connector barrel is pre-loaded with flux and solder. Just heat barrel with a propane torch or other heat source and insert battery cable for a perfect connection. Made from cast copper for super conductivity and come polarity specific for a secure fit. Available in straight, flag and lug end styles.



Straight



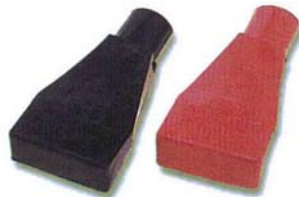
Flag Style



Lug Ends

#405-023 NEG. Straight	#405-024 POS. Straight
#405-031 NEG. Flag	#405-030 POS. Flag
#405-022 3/8" Lugs (pair)	#405-029 1/2" Lugs (pair)

Battery Terminal Covers



Use for a professional looking installation and to protect battery terminal ends from corrosion and shorting. Set includes 1-Red & 1-Black and will fit up to 1/0 gauge battery cable.

#404-100

Stud Terminal Covers



These terminal boots can be used with stud type junction blocks to protect against accidental shorting and corrosion while improving appearance. Available in pairs in red or black.

Red	#404-110
Black	#404-111

Battery Accessories

Battery Switch Kit



Kit includes 180 Amp master disconnect switch (standard or two pole for alternator shut-off), on/off plate, pair of #2 3/8" copper lugs, H.D. heat shrink to seal connections and a pair of rubber terminal insulators to cover studs and prevent shorts.

Standard Disconnect Kit **#930-300**

2-pole Disconnect Kit **#930-301**

Everything you need for a professional installation

Master Disconnect Switch



Sealed battery disconnect switch with aluminum On/Off face plate. Switch rated for 180 Amps continuous duty or 1000 Amps intermittent. Meets requirements of NHRA and SCCA.

#303-001

Double Pole Disconnect Switch



Four post switch for disconnecting alternator or other electrical device in addition to battery. Features 3/8" studs rated for 180 amps continuous duty and 10-32 studs rated for 20 amps. Includes On/Off face plate and wiring diagram.

#303-002

Battery Disconnect



A simple turn of the knob quickly disconnects battery voltage for maintenance or security. For top post negative battery terminal.

#303-000

Ground Strap



Excellent for grounding engine and frame together and will give extra protection on computer controlled vehicles. Heavy duty 4 gauge braided cable with 3/8" lug ends approximately 13" long.

#190-000

Continuous Duty Solenoids



#201-100 (4-wire)



#201-101 (case gnd)

Use for switching any high current application or solution for battery isolation in dual battery configurations. Rated for 12Volt 85Amp. 5/16" studs on input and output. (Includes wiring diagram).

High Power Solenoid



#201-102

Use for battery switching or other applications that require high current demand. This continuous duty solenoid is for 12 volt applications an is rated for 200 amps. Features isolated ground case 4 wire design with 5/16" input/output studs.

Battery Accessories

Remote Battery Terminals

Unique one piece designed terminal block allows complete access to both battery terminals for easy charging or jumpstarting. Middle safety plate prevents accidental shorts.



#406-220

Battery Junction Blocks

Stud type junction blocks. One pass through design and one stud only. 3/8"-16 threads, 7/8" long. Glass filled nylon construction with mounting holes. 3/8" nuts included. Rated 250 Amps.



#406-200



#406-201

Power Junction Block

5/16" single stud power junction block. Nylon construction with mounting holes. Can be used for power or ground distribution. Available in red or black.



#406-204

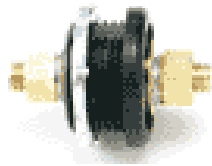
Black

#406-205

Red

Thru-Panel Battery Feed

Installs easily in a 1-1/4" hole to provide a positively isolated battery feed through terminal connection. Two 3/8"-16 brass stud terminals, 5/8" long.



#405-001

Battery Quick Connect

Use for high power connections or quick jump starts. Easy to use prefluxed and soldered tips. Just heat with an lp torch and your done. No crimping required.



Kit includes 1-conn. body and 2-tips
Use with #4 or #2ga cable

#401-200

Side Terminal Battery Power Tap

This brass adapter can be used to obtain power directly from your side post battery. The adapter secures battery cable and provides a 5/16" stud for easily connecting additional power accessories. Includes ring terminal.



#405-900

Stud Terminal Covers

These terminal boots can be used with stud type junction blocks to protect against accidental shorting and corrosion while improving appearance. Available in pairs in red or black.



Red #404-110

Black #404-111

Circuit Protection

Covered Fuse Block

6 circuit ATO/ATC fuse block with attached 8 ga. power lead with ring term., screw terminals, and cover. Includes mounting screws and crimp terminals. Rated 65 amp total all branches.



Fuses not included

#500-011

Multi-Circuit Fuse Panels

Multi-circuit 150 amp auxiliary fuse panels for simplification of wiring, use standard ATO/ATC blade style fuses and features a #10-32 input stud, fuse protected 1/4" output tabs and 4 recessed mounting holes. Available in 6,8,10 and 12 circuit panels. 30amp max/circuit. Includes crimp terminals.

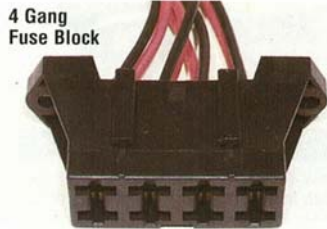
6 Fuse Panel	#500-003
8 Fuse Panel	#500-004
10 Fuse Panel	#500-005
12 Fuse Panel	#500-006



10 Fuse Panel #500-005

4 Circuit Fuse Block

This is a complete assembly for ATO/ATC type blade fuses. Units can be snapped together to gang for multiple combinations. Includes 8-inch leads of 12 ga. wire. Mounting holes for #10 screws are 3-1/8" apart.



#500-010

4 Circuit Fuse Block Kit

ATO/ATC fuse block with mounting holes. Multiple units lock together for additional circuits. Includes brass terminal strip and 4 individual terminals. 50 amp maximum total all circuits.



#500-009



Performance Automotive Wiring Components

Circuit Protection

In-Line Fuseholder

One pair of in-line fuseholders for standard 1-1/4" AGC style fuses. Holders have 18 gauge leads. (fuses not included)



#500-001

Weatherproof Fuse Holder

Premium sealed ATO/ATC automotive fuse holder. Features locking cover with mounting tab and 8" 12 ga. leads. Great for under the hood applications. 30 amp max.



Fuse not included

#500-000

Maxi Fuse Holder

Perfect for protecting the main battery feed to your fuse panel, high current accessories or alternator output. Use in place of those old fusible links. Features weather resistant cover, 7" long #8 ga. leads and 50 Amp maxi fuse.



Maxi holder with cover and 50A fuse

#500-020

ATO/ATC Fuseholder

Heavy duty in-line fuseholder with cover for automotive ATO/ATC style blade fuses. 10 gauge leads for up to 30 amp rating. (fuse included).



#500-002

Maxi Fuses

40Amp	#501-122
50Amp	#501-123
60Amp	#501-124
70Amp	#501-125
80Amp	#501-126



Fuse Kit

ATO/ATC automotive fuse assortment. Contains a total of 15 fuses, 3 each of the following values 5, 10, 15, 20 and 30 amp.



#501-109

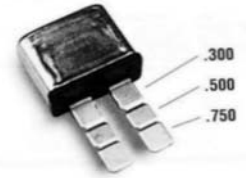
Automotive Fuses ATO/ATC Blade Type

AMP	Package of 5	Color
3	#501-100	Violet
5	#501-101	Tan
10	#501-102	Red
15	#501-103	Blue
20	#501-104	Yellow
25	#501-105	Natural
30	#501-106	Green



Circuit Protection

Circuit Breakers



Heavy duty replacement for ATO/ATC blade style fuses. Tabs can be snapped off to the required length. These breakers will remain open until trouble is corrected or power is removed. 12 volt DC only.

Amps	Fastronix
10	#502-151
15	#502-152
20	#502-153
30	#502-155

Circuit Breakers



Automatic reset circuit breakers, use for circuit protection in many 12 volt applications. Features insulated plastic housing, in-line mounting tabs and 10-32 stud terminals. Standard automotive Type I.

Amps	Fastronix
10	#502-101
15	#502-102
20	#502-103
30	#502-105
40	#502-106

Panel Mount Circuit Breakers



Design your own circuit protected switch panel with these easy to use panel mount circuit breakers. Features include push button manual reset, 1/4" push on terminals and the necessary hardware to mount in a 7/16" hole. Available in four amperage ratings.

Part #	Rating
#502-161	10 Amp
#502-162	15 Amp
#502-163	20 Amp
#502-164	30 Amp

Circuit Breaker Panels



Simplify many automotive wiring projects with these 4 gang circuit breaker panels featuring automatic resetting circuit breakers, 10-32 stud terminals, common input bus bar and all metal mounting bracket. Available in 10 or 20 amp configurations for 12 volt dc applications.

4 - 20 Amp Circuit Breaker Panel	#950-001
4 - 10 Amp Circuit Breaker Panel	#950-002
2 -10 Amp & 2 -20 Amp CB Panel	#950-000



Switches

Toggle Switch Safety Cover



Prevent accidental actuation with this rugged safety cover. Spring loaded design with red cover. Easy to install. For use with most on-off metal toggle switches with standard 15/32" mounting stem.

#300-200

Sealed Toggle Switches



Moisture and dust resistant neoprene-sealed toggles offer complete protection in harsh environments. Rated 21 Amps @ 14 Volt and feature screw terminals. Requires 1/2" mounting hole.

Part #	Description
#300-230	SPST ON/OFF
#300-231	SPST Momentary
#300-232	SPDT ON/ON
#300-233	SPDT Center Off
#300-234	SPDT ON/OFF/momentary
#300-235	DPDT Center Off

Tough silicon weatherproof switch cover screws on to **Fastronix** toggle switches to protect and seal switch from moisture, dust and dirt.

Package of 2

#300-201

Toggle Switch Boot



Heavy Duty Toggle Switches



Available in a variety of configurations for many applications. Rated 21 Amps @ 14 Volt. Includes .250 female quick connect crimp terminals. Requires 1/2" mounting hole.

Part #	Description
#300-210	SPST ON/OFF
#300-211	SPST Momentary
#300-212	SPDT ON/ON
#300-213	SPDT Center Off
#300-214	DPDT ON/ON
#300-215	DPDT Center Off

Jumbo LED bright indicator lights available in red, amber or green. Featuring chrome housing with nut and locknut and .250 male tabs for easy connections. 12VDC applications. Requires 7/16" mounting hole. (Packaged of 2 with .250 female crimp terminals included)



Red **#304-001**

Amber **#304-002**

Green **#304-003**

LED Toggle Switch



Black toggle handle tipped with a bright LED indicator. Available in Red, Green or Blue. Perfect for automotive applications. Requires 1/2" mounting hole. Switch has 1/4" tab terminals and is rated for 30A/12V DC.

Red - **#300-110**

Green - **#300-111**

Blue - **#300-112**

LED Indicators



LED bright indicator lights available in red, amber or green. Featuring chrome housing with nut and locknut and 3" wire leads for 12VDC. 7/16" mounting hole. (Packaged of 2)

Available in pairs - red, amber or green

Red **#304-005**

Amber **#304-006**

Green **#304-007**

Switches

Lighted Switch Panels



Panels available with 1,2,3 or 4 switches. Switch sections interlock to enable mixing panels of different colors or lengths. Quality sealed switches have 1/4" terminals and are rated for 20 amps @ 12 volts . For quick wiring use with pre-wired switch sockets Fastronix # 301-115.

Lighted Rocker Switches



Quality sealed commercial duty automotive/marine rocker switch. SPST 12 volt switch rated for 20 Amps. Indicator lights when on. 1/4" male terminals. Snaps into a .083" x 1.45" hole.

- Red #301-121**
- Amber #301-122**
- Green #301-123**

Switches	Lens	Part #	Mounting
1	Red	#930-011	1" x 1-7/8"
1	Amber	#930-021	1" x 1-7/8"
1	Green	#930-031	1" x 1-7/8"
2	Red	#930-012	2" x 1-7/8"
2	Amber	#930-022	2" x 1-7/8"
2	Green	#930-032	2" x 1-7/8"
3	Red	#930-013	3-1/16" x 1-7/8"
3	Amber	#930-023	3-1/16" x 1-7/8"
3	Green	#930-033	3-1/16" x 1-7/8"
4	Red	#930-014	4-1/8" x 1-7/8"
4	Amber	#930-024	4-1/8" x 1-7/8"
4	Green	#930-034	4-1/8" x 1-7/8"

Momentary Rocker Switch



Quality sealed commercial duty rocker switch. Great for use as a starter switch or for any application that requires a momentary operation. Can also be used with the **Fastronix** rocker switch panels. Rated at 20A @ 12V. Mounting hole 7/8"x1-1/2".

#301-120

Pre-Wired Switch Socket



Simplify wiring to **Fastronix** lighted rocker switches and switch panels with these pre-wired sockets. Sockets lock on to switch bodies for a secure connection. Features 3-14ga 12" leads.

#301-115

Specialty Rocker Switches



Quality sealed commercial duty rocker switches. Can be used with the Fastronix rocker switch panels. Rated for 20 amps @ 12 volts. Red indicator(s). Mounting hole 7/8"x1-1/2".

- #301-124** - SPDT center off
- #301-125** - DPDT center off
- #301-126** - SPTT off/on/on

Rocker Switch Socket Kit



Custom wire **Fastronix** lighted rocker switches and switch panels. Makes for easy switch installation and swapping. Includes latching socket and (4) 16-14ga terminals. Use **Fastronix** crimp tool #600-002 for a perfect wire connection.

#301-116

Switches

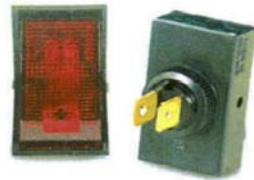
Rocker Switches



One pair of mini snap-in single pole (on/off) rocker switches. Features a red visible indicator when switched on. Switch snaps into a standard size hole (.480 by 1.072). Rated 8 amps at 14 volts. Has 1/4" male tab terminals.

#301-201
(package of 2)

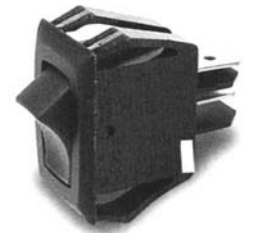
Round Hole Rocker Switches



Easily mount in a 1/2" hole. Available in standard black or fully illuminated in a variety of colors. SPST switch rated 12 volt 30 amp with 2 or 3 1/4" terminals. (Package of 2 switches)

Part #	Color
#301-300	Blk. Non-illuminated
#301-301	Red Glow
#301-302	Amber Glow
#301-303	Blue Glow
#301-304	Green Glow

Rocker Switches



One pair of mini snap-in single pole (on/off) rocker switches. Switch snaps into a standard size hole (.480 by 1.072). Rated 8 amps at 14 volts. Has 1/4" male tab terminals.

#301-200
(package of 2)

Starter Switch

Heavy-duty momentary push button switch with neoprene cap for extra protection against dust and moisture. Flush terminal screws. 5/8" diameter mounting stem. Silver contacts rated at 60 Amps at 12 Volts.

#305-001



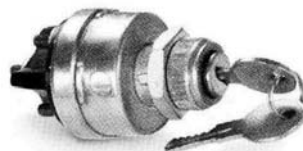
Door Switch



Grounding style pin switch pair, for hood, trunk or doors. Use to control lights alarms or accessories. 5/16-18 threads with bullet crimp terminals. Use with relay to switch (+) 12V.

#305-002

Universal Ignition Switch



#305-010

Universal keyed ignition switch with 4 position pattern, (Acc Off - On - Start). 10-32 stud terminals. Mounting stem 7/16" long, with a 3/4" diameter. Rated to 15 amps. Use with relays for higher output current capabilities

Momentary Push Button Switch



Normally open push button switch with screw terminals. Mounts in standard 1/2" hole. Use for momentary action of lights or accessories. 6 amp rating.

#302-001

Relay Devices

Relay Socket



Prewired relay socket for use with Bosch type automotive relays (Fastronix # 201-001). Features five 14gauge multi-colored 12" leads and are gangable. Includes wiring diagram.

#200-001

Automotive Relay



12 Volt SPDT Bosch type automotive relay. 30Amp contacts. Plastic housing with mounting tab. Use for switching high current automotive accessories.

#201-001

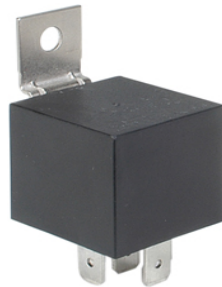
Relay Socket Kit



Build your own custom relay sockets for automotive type relays. Includes socket, five push in locking crimp terminals for 16-14ga. wire and relay wiring diagram.

#200-010

Waterproof Automotive 40 Amp Relay



12VDC SPDT automotive relay with 40 amp contacts. This relay is sealed for use in exterior or damp locations. Features plastic housing with metal mounting bracket. Use for switching high current accessories.

#201-003

Automotive Relay and Socket



12V SPDT 30 amp relay and prewired socket with 12" leads. Many uses include controlling fuel pump, water pump, fans, or any other high current accessory. Diagram included.

#900-000

Continuous Duty Solenoids



#201-100 (4-wire)



#201-101 (case gnd)

Use for switching any high current application or solution for battery isolation in dual battery configurations. Rated for 12Volt 85Amp. 5/16" studs on input and output. (Includes wiring diagram).

High Power Relay



For high current switching. Example, connect to ignition circuit to control or shut down power circuits, accessories or fuse panels through ignition switch. SPST dual contacts rated for 75 amps.

#201-020

Wiring Accessories

Split Loom



Split loom is one of the most popular conduits for holding groups of wire. It protects wires against abrasion or pinching. Split loom has a slit for easy insertion of wires over a long run. Made from black polyethylene and available in a variety of sizes.

1/4"	#141-010	10' coil
3/8"	#142-010	10' coil
1/2"	#143-010	10' coil
3/4"	#145-008	8' coil

Cable Clamps



Heavy duty plated steel neoprene cushioned clamps. Use to secure hoses, fuel lines, wire harnesses, cables and loom tubing. Clamps have a 1/4" mounting hole and are available in a variety of sizes.

Size	Part #	Qty
1/4" #4	#403-500	10pc.
3/8" #6	#403-501	10pc.
1/2" #8	#403-502	10pc.
5/8" #10	#403-503	8pc.
3/4" #12	#403-504	8pc.
7/8" #14	#403-505	7pc.
1" #16	#403-506	6pc.

Ultra High Temp Sleeving



A 100% woven black fiberglass sleeving for applications with temps to 1200 F. Protects wiring and cables from extreme temperatures. Available in 3' lengths in 3 sizes.

Heat protection to 1200 deg.

3/8"	#140-010
1/2"	#140-020
3/4"	#140-030

Nylon Cable Clamps



Lightweight black nylon cable clamps. Ideal for securing brake lines, wires cables and fuel lines. All have a 13/64" mounting hole and are available in ten packs.

Size	Part #	Qty
1/8"	#403-550	10pc.
3/16"	#403-551	10pc.
1/4"	#403-552	10pc.
5/16"	#403-553	10pc.
3/8"	#403-554	10pc.
7/16"	#403-555	10pc.
1/2"	#403-556	10pc.

High Temp Sleeving Kit



Kits include 3' length of *Fastronix* Ultra high temp sleeving and (6) adhesive lined heat shrink ends to hold and bond sleeving. Use to protect cables and wiring from extreme heat areas. Available in 3 sizes.

3/8"	#140-110
1/2"	#140-120
3/4"	#140-130

Nylon Clamp Assortment Packs



Strong but lightweight black nylon clamp assortments, great for securing a wide variety of smaller size brake lines and cables. Available in 30 or 50 packs.

30 pack	#403-590
<small>10each 1/8", 3/16" and 1/4"</small>	
50 pack	#403-591
<small>10each 1/8", 3/16", 1/4", 5/16" and 3/8"</small>	

Heat Shrink Tubing



Use to protect and seal wiring splices and connections. Assortment kit containing two 5" pieces of the following sizes, 3/16", 1/4", 3/8" and 1/2".

#404-003

Wiring Accessories

Power Terminal Block



Provide power to all your electrical devices. Features a 1/4-20 input stud, nickle-plated bus bar, 12 stainless steel terminal screws, protective insulator cover, stud terminal boot, and includes nylon insulated ring terminals

#406-212

Weatherproof Grommets



Much better than standard grommets. Use as a firewall feed-through bushing for wires and cables. Fitting when tightened locks onto wires or cable providing strain relief protection as well as a water tight seal.

Part #	Cable Dia. Range	Hole Size
#403-720	.18 -.31 (qty.2)	5/8
#403-721	.27 -.45 (qty.2)	3/4
#403-722	.45 -.70	1-1/8
#403-723	.59 -.99	1-1/2

Ground Terminal Block



The best way to properly ground all your electrical devices. Features a 1/4-20 input stud on a nickle-plated bus bar with 12 stainless steel terminal screws. Also includes premium nylon insulated ring terminals.

#406-211

Snap-In Bushings



Use these in the firewall or wherever wiring is passing through panels to eliminate sharp edges and to protect wires and harnesses. Snaps into standard holes and allows easy pulling of wires due to their nylon construction.

Fastronix	Bushing I.D.	Mount Hole	Quantity per pkg.
#403-701	1/4"	3/8"	10
#403-702	3/8"	1/2"	10
#403-704	5/8"	3/4"	6

Snap Bushing Assortment
(10)-1/4" (10)-3/8" (10)-5/8"
#403-710

Ground Terminal Strip



#406-210

This common bus brass terminal strip is the best and right way to create a ground circuit for your dash area or accessories. Has (10) 8-32 screw terminals and (2) 1/4-20 supply studs on an insulated base with mounting holes.

Rubber Grommets

Size I.D.	Part #	Mnt. Hole	Qty
1/8"	#403-730	1/4"	(10)
3/16"	#403-731	5/16"	(10)
1/4"	#403-732	3/8"	(10)
5/16"	#403-733	7/16"	(10)
3/8"	#403-734	1/2"	(10)
1/2"	#403-735	13/16"	(6)
5/8"	#403-736	7/8"	(6)
3/4"	#403-737	7/8"	(6)



Rubber Grommet Assortment



Protect wiring routed through panels with this 18 piece rubber grommet assortment. Kit contains (5)-3/16", (5)-1/4", (5)-3/8", (1)-1/2", (1)-5/8" and (1)-3/4" (grommet size is I.D.)

#403-740

Wiring Accessories

Euro Style Terminal Strip

#406-100



Easy to use - no crimping or soldering, just strip, insert wire and tighten set screw. Strips can be easily cut for any application. Dead front design to prevent shorts. Accepts wire sizes 8 to 18 gauge.

7 Terminal Junction Box



Give your wiring a professional look with this enclosed stud terminal junction box featuring 10-32 studs, five open, five closed grommets and all necessary hardware. Ideal for trailer wiring.

#406-310

Multi-Stud Junction Block Kits



Useful in a wide variety of automotive electrical wiring applications. Feature #10-32 brass studs and include nuts, lock washers and premium nylon double crimp ring terminals.

- #406-304-** 4 stud block, hardware and 10 ring terminals
- #406-306-** 6 stud block, hardware and 15 ring terminals
- #406-308-** 8 stud block, hardware and 20 ring terminals

Weather Pack Connector Kits

Wire like the pros with these locking weather pack connector kits. Silicone seals protect against dust, dirt and moisture and ensure a fail-safe connection. Connector kits are available in one through six pin configurations and include, connector bodies, male and female 16-14 gauge terminal pins and green seals.



4 Pin Connector Kit #401-104

Weather Pack Connector Kits	
1-Pin	#401-101
2-Pin	#401-102
3-Pin	#401-103
4-Pin	#401-104
6-Pin	#401-106

Replacement Pins
(5-male & 5-female)

20-18	#401-111
16-14	#401-112
12-10	#401-113

Wire Seals (10pack)

Red	#401-114
Green	#401-115
Gray	#401-116
Blue	#401-117



**Weather Pack Pin
Removal tool
#600-001**

Weatherpack Pin Tool

#600-001



A must have tool for removing pins from weatherpack connectors. Allows you to reconfigure connector just in case you make a mistake or want to re-use connector. Simply slide over terminal pin and pull wire out.

Weather Pack Crimp Tool



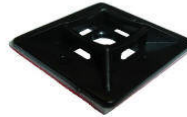
#600-002

Crimps most weather pack terminals and open barrel non-insulated connectors 22-10 AWG. Ratchet action ensures perfect crimps. Features steel frame, contoured grips and the ability to change dies. (Alternate die sets available separately)

Wiring Accessories

Cable Tie Bases

Secure cabling with these cable tie bases. Choose from the adhesive backed base or the nylon push mount base.



4-way adhesive backed /screw mount



Push mounts in a 1/4" hole

#403-000 (pkg of 6)

#403-001 (pkg of 10)

Nylon Cable Ties

These quality nylon ties are available in a variety of colors to match any job. The 4" ties have a 18lb. strength rating and the 7-1/2" ties have a 50lb. strength rating.



Color	4" (pkg.50)	7-1/2" (pkg.40)
Black	#403-100	#403-200
Brown	#403-101	#403-201
Red	#403-102	#403-202
Orange	#403-103	#403-203
Yellow	#403-104	#403-204
Blue	#403-106	#403-206
Purple	#403-107	#403-207
Grey	#403-108	#403-208
Neon Pk.	#403-112	#403-212
Neon Org.	#403-113	#403-213
Neon Grn.	#403-115	#403-215

Molded Loop Connectors

Molded connectors feature a 12" loop with 16 gauge wire. Just cut loop and splice to use as a quick disconnect for electrical accessories.



#401-001 shown (2-wire)

#401-001	2-Wire
#401-002	1-Wire
#401-003	3-Wire
#401-004	4-Wire sq.
#401-005	5-Wire
#401-006	6-Wire
#401-008	8-Wire

Bullet Tap Splices

Everything you need to quickly splice into an existing wire while providing the flexibility to connect or disconnect through the bullet terminal as needed. Includes 5-splice taps and 5-bullet terminals. (18-14ga)



5 bullet terminals / 5 splice taps

#400-910

Terminal Strip Kits

Use to eliminate splicing and simplify many automotive wiring projects. Both terminal kits contain 3 quality double row terminal blocks (4,6 and 8 position) with 6-32 screws. The #940-200 kit includes (40) 16-14 gauge nylon double crimp ring terminals while the #940-201 kit includes 20 1/4" push on tabs (10-45deg.&10-flat) to enable the use of 1/4" quick disconnects.



#940-200



#940-201

Terminal Products

Premium Splice Pack



When only the best will do use the ultimate heat shrink solder splice. Crimped for reliability, soldered for strength and conductivity and heat sealed for superior durability and protection.

Assortment 10 Pack Includes (3)20-18ga (5)16-14ga (2)12-10ga.

#400-420

Heat Shrink Terminals

Heat sealable crimp-on terminals provide a rugged environmentally sealed connection for wire gauges 22 through 10. They insulate, seal and protect electrical connections from water, abrasion and corrosive elements.

Heat Shrink Terminal 10 Packs.

#10 Ring Terminal

Gauge	Part#
22-18	#400-401
16-14	#400-402
12-10	#400-403



1/4" Male Push On

Gauge	Part#
22-18	#400-404
16-14	#400-405
12-10	#400-406



1/4" Female Push On

Gauge	Part#
22-18	#400-407
16-14	#400-408
12-10	#400-409



Butt Splice

Gauge	Part#
22-18	#400-410
16-14	#400-411
12-10	#400-412

Solder Splice Connectors



Solder splice connectors have a solder ring and a heat shrink insulator sleeve. Strip and insert wires, when heat is applied the solder melts inside bonding the wires while the adhesive and insulation melt and shrink sealing the connection. (Package of 10)

WireGauge	Part#
22-18	#400-413
16-14	#400-414
12-10	#400-415

Splice Taps



3M splice taps #801(blue) for 18-14gauge wire. Quick connections with no wire stripping. Simply insert both wires and squeeze down metal insert with pliers and snap cover in place.

#400-900
(package of 10)

Moisture Resistant Splice Taps



Gel Filled

3M gel filled splice tap #804 (blue), 18-14 gauge. Protective gel seals connection ensuring a moisture resistant barrier preventing corrosion.

#400-901
(package of 5)

Terminal Products

Performance Ring Terminals

Quality nylon insulated crimp on ring terminals available in a wide range of wire and stud sizes. These Fastronix terminals feature an extra sleeve and can be double crimped for more strength and a better connection.

Available in 10 or 50 Packs

Quick connect Terminals

Standard 1/4" fully insulated nylon crimp-on quick connect terminals. Available in both female and male, packaged in quantities of 10 or 50.



Gauge	Qty	Female	Male
16-14	10	#400-200	#400-203
16-14	50	#400-202	#400-204
12-10	10	#400-300	#400-303
12-10	50	#400-302	#400-304

Use as an in-line connector

Use with switches, fuse blocks, relays.

Butt Connectors



Gauge	10 Pack	50 pack
22-18	#400-140	#400-141
16-14	#400-240	#400-241
12-10	#400-340	#400-341

Heavy duty nylon insulated crimp on butt connectors feature a solid barrel for a superior connection. Available in three sizes in packages of 10 or 50.

Pre-cut Heat Shrink



Internal adhesive melts when shrunk. Shrinks to 1/3 original size

1-1/4" long dual-wall heat shrink pieces with adhesive liner allows you to quickly secure and weatherproof all crimp terminal wire splices and connections.

1/4" #404-011 (20 pack)

3/8" #404-012 (15 pack)

#8 Ring Terminal

Gauge	10 Pack	50 Pack
22-18	#400-124	#400-125
16-14	#400-224	#400-225
12-10	#400-324	#400-325

#10 Ring Terminal

Gauge	10 Pack	50 Pack
22-18	#400-126	#400-127
16-14	#400-226	#400-227
12-10	#400-326	#400-327

#1/4" Ring Terminal

Gauge	10 Pack	50 Pack
22-18	#400-130	#400-131
16-14	#400-230	#400-231
12-10	#400-330	#400-331

#5/16" Ring Terminal

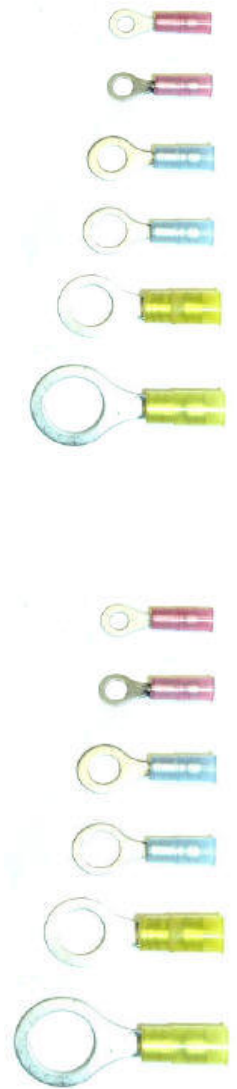
Gauge	10 Pack	50 Pack
22-18	#400-132	#400-133
16-14	#400-232	#400-233
12-10	#400-332	#400-333

#3/8" Ring Terminal

Gauge	10 Pack	50 Pack
22-18	#400-134	#400-135
16-14	#400-234	#400-235
12-10	#400-334	#400-335

#1/2" Ring Terminal

Gauge	10 Pack	50 Pack
22-18	X	X
16-14	#400-236	#400-237
12-10	#400-336	#400-337



***GET
Wired***

With

Fastronix
Solutions

Performance Automotive Wiring Components

Now Available

AT

